

BLUEcloud Analytics

Getting Started Guide

Last updated April 2019



SirsiDynix®

All information contained herein is the proprietary property and trade secrets of SirsiDynix. This manual shall not be reproduced, transmitted, stored in a retrieval system, duplicated, used or disclosed in any form or by any means for any purpose or reason, in whole or in part, without the express written consent of SirsiDynix or as except provided by agreement with SirsiDynix. The information in this document is subject to change without notice and should not be construed as a commitment by SirsiDynix.

SirsiDynix grants the right of copying the enclosed material solely for the internal business use of the end user if (1) this document has been legitimately obtained by purchase or by license agreement in conjunction with SirsiDynix products, and (2) this copyright statement is included with each copy. All other copying or distribution is strictly prohibited. Complying with all applicable copyright laws is the responsibility of the user.

SirsiDynix trademarks include but are not limited to BLUEcloud™, BookMyne®, Directors Station®, EOS.web®, eResource Central®, MobileCirc®, SirsiDynix®, SirsiDynix Enterprise®, SirsiDynix Horizon®, SirsiDynix Portfolio™, SirsiDynix Symphony®, Unicorn®, Web Reporter™, and WorkFlows™. Unauthorized use of any SirsiDynix trademark is prohibited.

Other product and company names herein may be the trademarks of their respective owners and SirsiDynix claims no ownership therein. All titles, versions, trademarks, claims of compatibility, etc., of hardware and software products mentioned herein are the sole property and responsibility of the respective vendors. SirsiDynix makes no endorsement of any particular product for any purpose, nor claims responsibility for its operation and accuracy.

SirsiDynix products are developed exclusively at private expense. Use, duplication, or disclosure by the U.S. Government is subject to restrictions as set forth in DFARS 252.227-7013(b)(3) and in FAR 52.227-19(b)(1,2).

Contents

About this guide	iv
Documentation updates	iv
Comments and suggestions	v
Getting started with BLUEcloud Analytics	1

About this guide

This Getting Started Guide explains how to set up and configure BLUEcloud Analytics to work with MicroStrategy. Once you have finished working through this guide, you will have an understanding of how to generate an analytical report using the MicroStrategy interface.

For more information about this guide, see these topics:

Documentation updates on page iv

Comments and suggestions on page v

Documentation updates

Updates to this guide are posted to the customer support website between releases, as necessary. These updates provide corrections to unclear, incorrect, or incomplete information. They also provide documentation for enhancements that were not complete at the time the guide was first published.

You may access the customer support website at <https://support.sirsidynix.com>.



The customer support website requires a username and password. If you do not already have a username and password, contact your system administrator to receive one. If you are the system administrator for your library and need a username and password for the support website, please contact SirsiDynix Customer Support to receive one.

Documentation updates can include, but are not limited to, the following formats:

- PDF (Portable Document Format)
- HTML Webhelp
- EPUB
- Microsoft Word

To view a PDF file, you must install Adobe's Acrobat Reader on your workstation. You can download Acrobat Reader free of charge at Adobe's web site, <http://www.adobe.com>. Several open source eReaders are also available online which can open other formats such as EPUBs. Please contact SirsiDynix Customer Support if you are having trouble finding this guide in the format that you need.

Comments and suggestions

SirsiDynix welcomes and appreciates your comments on its documentation. We want to know what you think about our manuals and how we can make them better. If you have comments about this guide, please send them to docs@sirsidynix.com.

Be sure to include the title and version number of the guide and tell us how you used it. Then tell us your feelings about its strengths and weaknesses and any recommendations for improvements.

Getting started with BLUEcloud Analytics

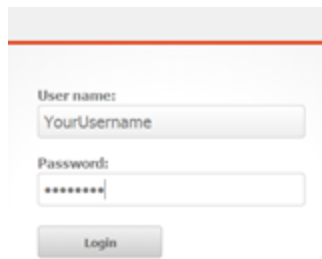
BLUEcloud Analytics is SirsiDynix's cloud-based service that extracts a copy of your library's ILS data; transforms it into a single, homogeneous form; then loads it into a uniform database structure that MicroStrategy can readily query to produce both standard and custom analytical reports.

This Getting Started Guide is designed to walk you through the steps needed to connect you to BLUEcloud Analytics through the MicroStrategy Interface and perform several of the most commonly used data analysis and reporting operations.

To begin using BLUEcloud Analytics

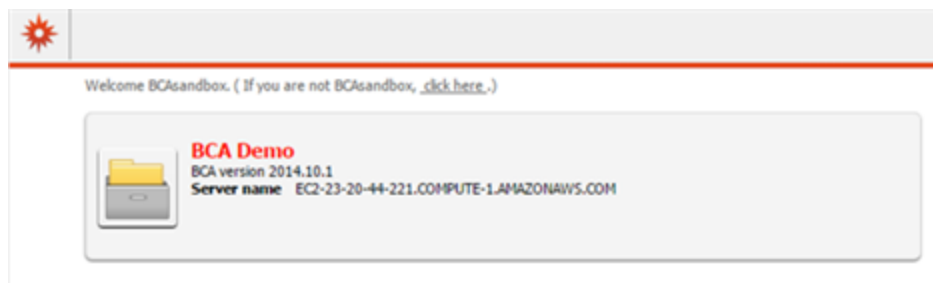
1. Navigate to the link you were provided for your instance of BLUEcloud Analytics.

The MicroStrategy log-in page displays.

A screenshot of the MicroStrategy login page. It features a white background with a red horizontal line at the top. Below the line, there are two input fields: "User name:" with the placeholder text "YourUsername" and "Password:" with a masked password "*****". A "Login" button is positioned below the password field.

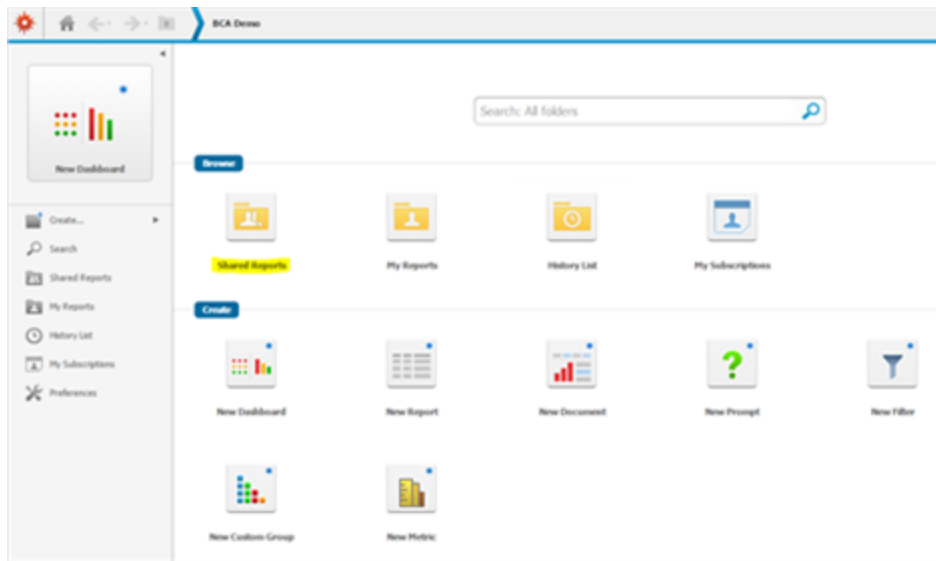
2. Enter the user credentials you were provided and choose **Login**.

The Projects page displays.



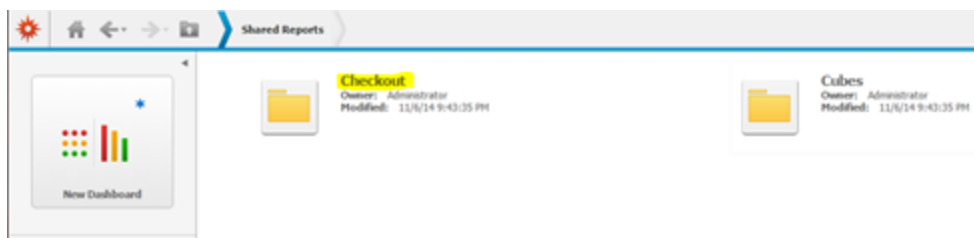
3. Select your Project.

The MicroStrategy home page displays. Here you will find multiple options for browsing existing reports and dashboards, and for browsing your project.



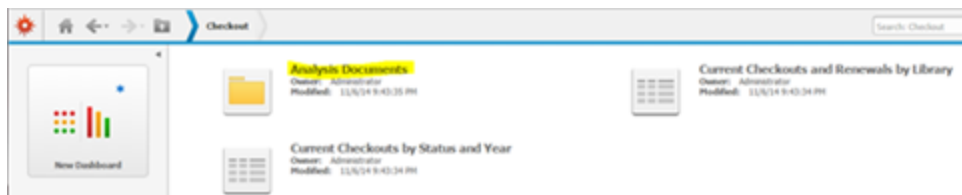
4. Choose **Shared Reports** within the **Browse** menu to view the reports and dashboards included in MicroStrategy.

The **Shared Reports** directory and its contents—**Checkout** and **Cubes**—display.



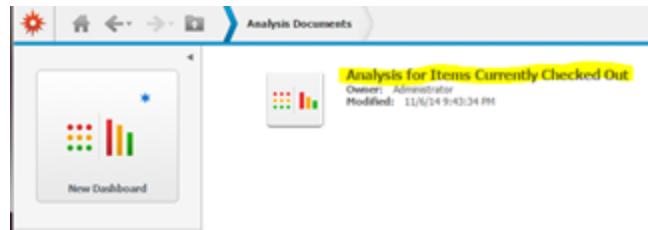
- **Cubes** are the data repositories that BLUEcloud Analytics creates from your copied ILS data and which MicroStrategy uses to produce rapid, easily accessible reports.
- The other directories (initially **Checkout** and **Users**, to be followed by all the ILS data sets as they are developed and transformed) are where your pre-configured dashboards and reports are located.

5. Choose **Checkouts**.

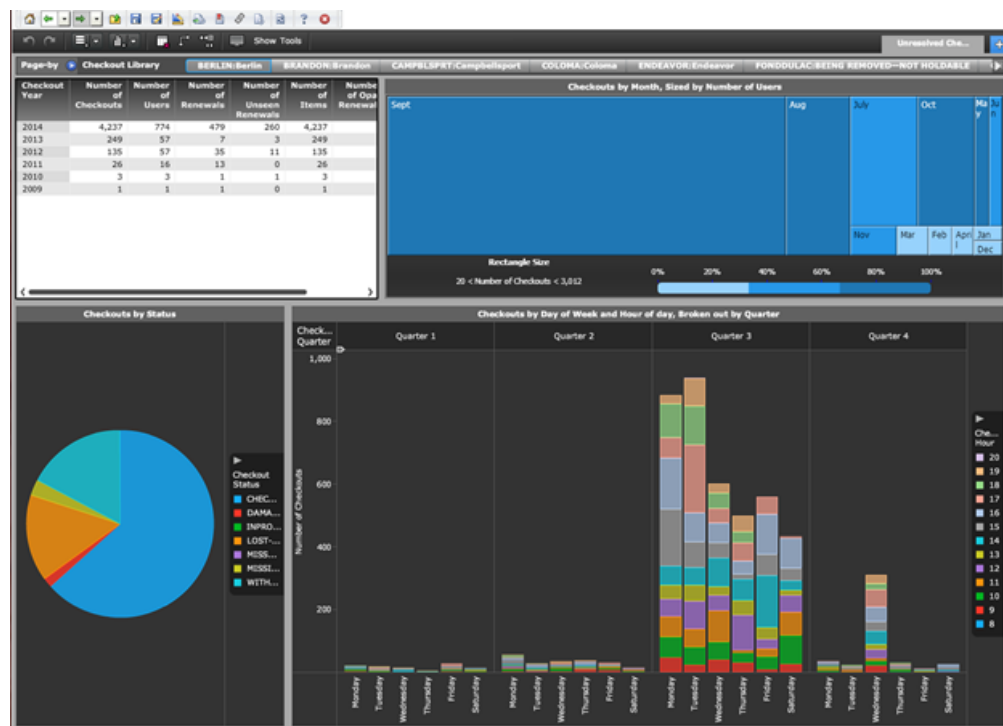


Here you will see two standard reports (we will return to these in a moment) and another directory, **Analysis Documents**. **Analysis Documents** is where the dashboards are stored. These dashboards utilize Visual Insights (from the MicroStrategy interface) for generating reports.

6. Choose **Analysis Documents**.



7. Select **Analysis for Items Currently Checked Out**.

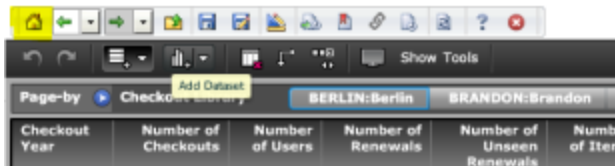


This is the Visual Insights interface for MicroStrategy. This dashboard (which has already been created for you) displays all of your library's relevant Checkouts data.

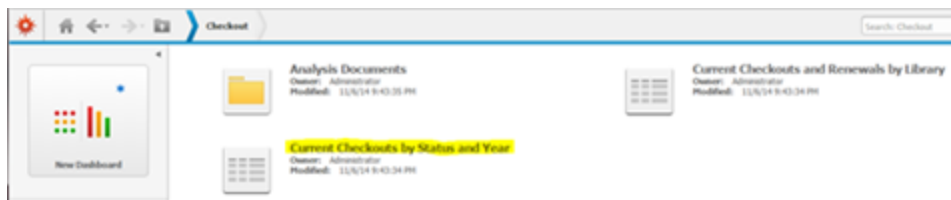
The interface features drag-and-drop functionality, tools for exporting your data in a variety of formats, and the ability to change how your data displays. You can also hover over the buttons in the left-hand pane to see contextual information, and the Navigation Toolbar at the top-left of the screen offers additional controls for the interface.

Getting started with BLUEcloud Analytics

- To view the extensive help guide that MicroStrategy (our OEM partner) offers, please visit [MicroStrategy Web Help](#).
 - To view a few short videos on how to use this interface, please visit [Using the MicroStrategy Interface](#).
8. To return to the BLUEcloud Home directory, click the home button in the top-left corner of the interface.

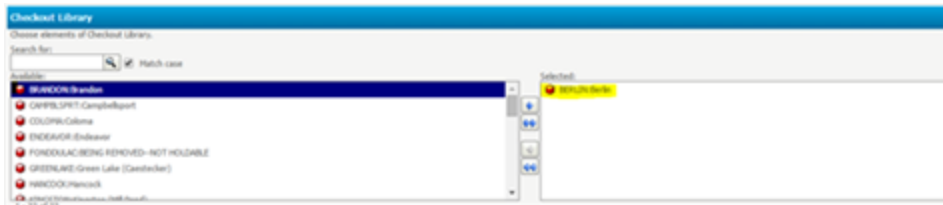


9. Navigate again to **Shared Reports>Checkout** where you will see the included standard reports.



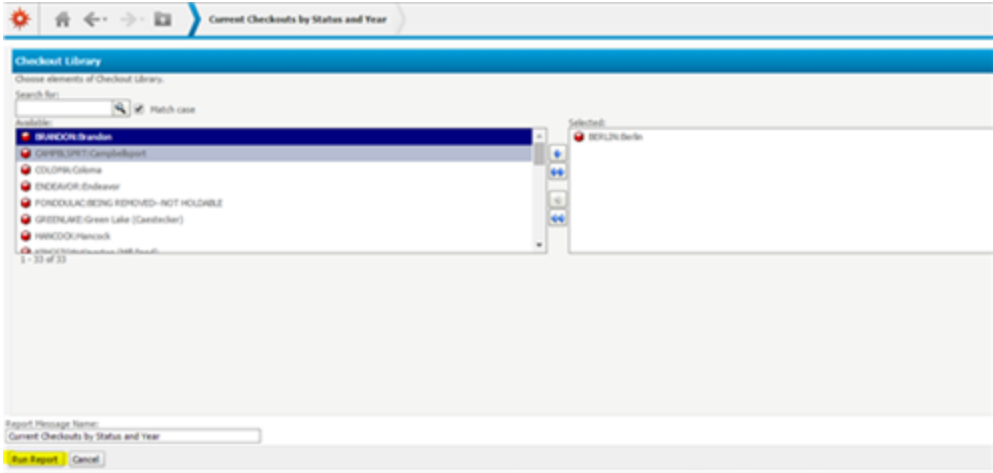
10. Choose **Current Checkouts by Status and Year**.

The Report Builder displays.



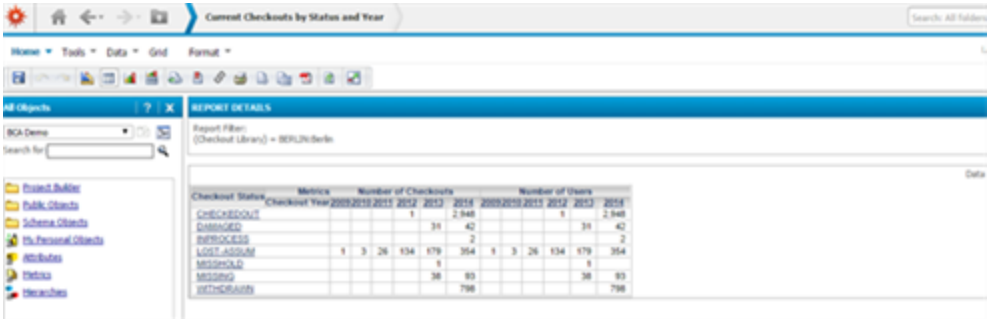
This particular report is designed to show Current Checkouts by Status and Year. The list on the left shows the libraries that are available within your project for reporting. You may select a single or multiple libraries.

For this example we will double-click **BERLIN** to select it. Doing this moves BERLIN into the right column, indicating it has been selected for this report.



11. With the Libraries selected that you want to report on, click **Run Report** at the bottom left of the interface.

MicroStrategy runs the requested report and displays a table containing the Checkout status broken down by year.



For additional resources that offer more advanced reporting capabilities, click the ? button on either the **All Objects** or **REPORT DETAILS** menu.



These direct you to Help topics that will guide you in utilizing the options available within the Report Builder interface. For a short video that demonstrates the use this of interface, please visit [Using the MicroStrategy Interface](#).