

NPC **courant**

VOLUME 1, SPECIAL EDITION

THE Dutch NPC News Source

JANUARY 2002 \$1.95

Paralympics Coming to Utah

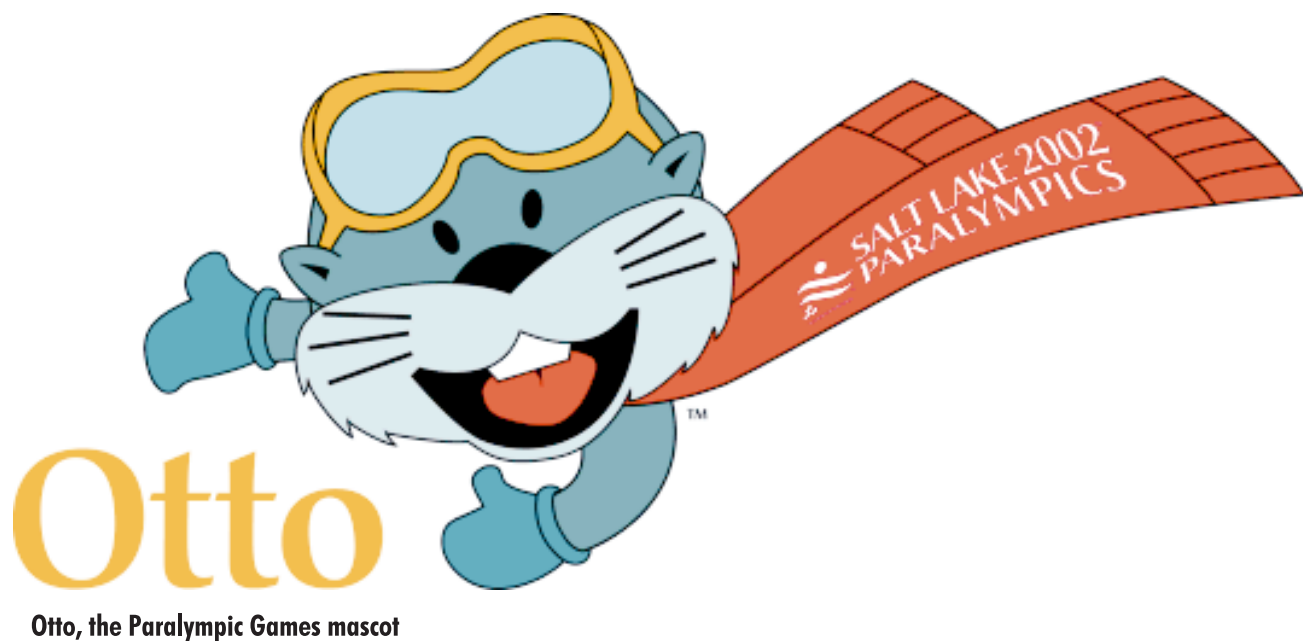
by Garrett Winn

In March of 2002, Salt Lake City will be the home of the next Paralympic Winter Games.

Athletes from around the world are coming to Utah to participate in the events.

Especially anticipated are the Dutch athletes who are expected to attend.

The VIII Paralympic Winter Games Salt Lake City 2002 will feature three sports to be contested by up to 1,000 elite athletes with a disability from 36 countries.



Flame Journey

from Paralympics2002.com

The Journey of Fire is a symbolic movement of fire from the outer edges of Utah to Salt Lake City. It was created in order to sustain a high level of excitement in the period between the Olympic Closing Ceremony and the Paralympic Opening Ceremony.

From March 2-5, sixteen Utah communities will hold celebrations to ignite the spirit of the Paralympic Games in their community. These areas range as far south as St. George and as far north as Brigham City.

From over 225 nominations, 75 Utahans were chosen to run with the Paralympic Flame.



Salt Lake Paralympics May be Most Watched in History



Salt Lake City Skyline

from Paralympics2002.com

The 2002 Paralympic Winter Games will be widely viewed internationally as broadcast entities continue to show strong interest in airing the Games. SLOC states that more than 28 participating countries will have access to live and pre-recorded Games segments.

In addition to seeing more Paralympic Games on television, anyone around the globe can experience the Games real-time with the technology that supports the Paralympics website. For the first time, not only will live competition results be available, but fans will also be able to see in-depth historical results dating back to the first Paralympic Games in 1976.

"With the mounting interest to see the Paralympic Games on television combined with the stellar Internet technology developed, these will be one of the most-followed Paralympic Games in history," said Mitt Romney, SLOC president and CEO. "Fans from around the globe will have the opportunity to follow these Games and their favorite winter athletes like never before."

The Paralympic Winter Games will be held March 7 - 16, 2002. There are 100 medal events in three sports as well as Opening and Closing ceremonies. The Paralympics bring world-class athletes from around the globe together to compete in a variety of exciting sports - alpine skiing, nordic skiing and ice sledge hockey. An expected 1,000 athletes and team officials representing 36 countries will be participating.



Famous Dutch windmills

Entertainment Section

Places to Go in Utah

Temple Square is headquarters of The Church of Jesus Christ of Latter-day Saints and home to the Salt Lake Temple, Tabernacle, and Assembly Hall.

Revival architecture in the United States. It overlooks the city and is located at 300 North and State Street.

Historic Heber Valley Railroad, which dates back to 1899, and has vintage coaches pulled by turn-of-the-century steam locomotives.



Temple Square with Christmas lights

Other points of interest nearby are the Family History Library at 35 North West Temple, the Museum of Church History and Art at 45 North West Temple, and the Beehive House at South Temple and State Street.

Cathedral of the Madeleine—The Romanesque-Gothic sandstone Roman Catholic cathedral is a designated Utah historic site. Located at 331 East South Temple Street, it was dedicated in 1909 and funded by wealthy Catholic mining families.

Utah State Capitol—Built of granite and completed in 1915, the Utah State Capitol is considered one of the finest displays of Renaissance



Hansen Planetarium—Located at 15 South State Street, the planetarium offers two floors of exhibits, including a moon rock and a domed theater featuring star shows and laser-light music presentations.

Great Salt Lake—Approximately 92 mi (148 km) long and 48 mi (77 km) wide, the Great Salt Lake is the largest inland body of salt water in the Western Hemisphere. Rivers and streams carry minerals into the lake, which has no outlet; the minerals are trapped and used as resources. The lake holds about 4.5 to 4.9 billions tons of dissolved salt, and its salinity content ranges from 9 to 28 percent (the salinity content of oceans is about 3 percent). The Great Salt Lake also provides ample recreation—including year-round boating—and is home to millions of ducks, geese, gulls, and other shore birds.

Antelope Island—The largest of the Great Salt Lake's 10 islands. It is 15 mi (24 km) long and 5 mi (8 km) wide. Its peaks rise 2000 ft (609.5 m) above the water. The park features the largest herd of American bison in the United States and is about a 50-minute drive from downtown Salt Lake City.

Park City—Located 32 mi (51.5 km) east of Salt Lake City. It was founded in the late 1860s by mining prospectors. Features include Historic Main Street with its award-winning restaurants, theater, and art galleries.

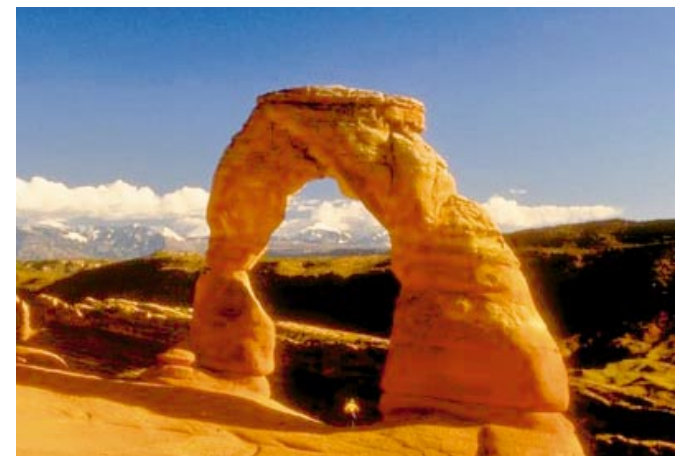
Thanksgiving Point—Just half an hour drive south of Salt Lake City, Thanksgiving Point is home to a large and extensive Dinosaur museum, several gift shops, and entertainment at The Barn.

Heber Valley—Home of Soldier Hollow, includes many western traditions, recreational activities, and spectacular views. Features include the



Sundance—An arts colony and small ski area north of Provo. Robert Redford bought the area in 1969.

Utah's National Parks—These parks are a four to six hour drive south of Salt Lake City. Southern Utah's unique redrock scenery is the main attraction in five national parks: Arches, Canyonlands, Capitol Reef, Grand Staircase, and the northern portion of the Grand Canyon.



What to Expect in Utah

by Garrett Winn

Climate

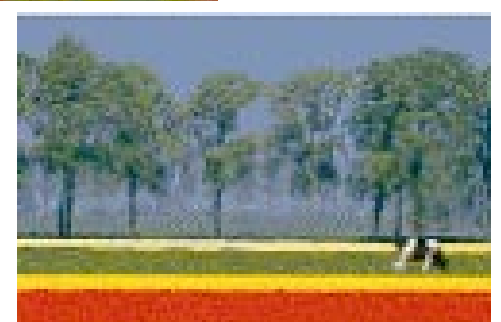
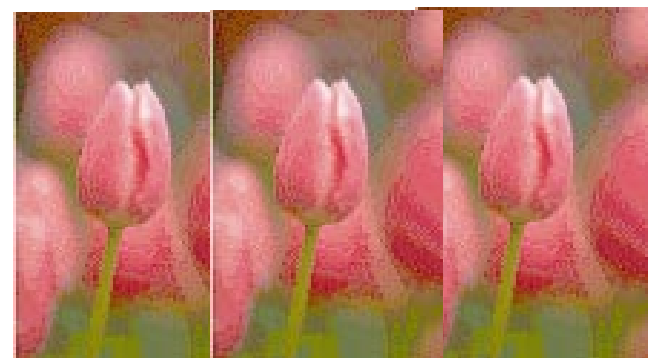
Utah is situated in a high alpine desert, where winters are dry but often cold, and marked with abundant precipitation in mountain areas. In Salt Lake City, the average February temperature is 37 F (3 C), while snowfall averages 10 in (25 cm). In Park City, the average temperature in February is 20 F (-6 C), while snowfall is 34 in (87 cm).

Altitude

Salt Lake City is 4300 ft (1310 m) above sea level, while Park City's altitude is 6945 ft (2117 m).

Liquor Laws

Utah's liquor laws are unique. You may order beer, a cocktail, or wine in most restaurants if you also order a meal. Private clubs may serve drinks without food orders, but must offer food. To enter a private club, one must purchase a membership (similar to a cover charge, about \$5 for two weeks). Most clubs allow you to bring in up to five guests.



Volunteer Section

Teacher Talks About Helping Dutch Athletes

Greetings, my name is Glen Loveland. I am a 53 year old school teacher, father of five and husband for the last 30+ years. I live in the small community of Kaysville, approximately 20 miles north of Salt Lake City.

My first experience with the Dutch people was between 1967 and 1970 when I volunteered as a missionary in your great nation. I returned to Holland in 1995 as part of a European vacation with my family.

I appreciate the history, culture and food of your unique land. I am looking forward to assisting the Netherland's deligation by helping you enjoy your Paralympic experience at the 2002 Winter Games. See you in March!



Glen Loveland

Former Dutch Cow Milker to Lend a Hand

My name is Ralph Crook. I was born in Heber City, Utah on a dairy farm milking Dutch cows. We left the farm when I was nine years old but farming never left me. I returned to Heber to live with my aunt and uncle who's farm is right next to Soldiers Hollow, the cross country venue.



World Traveller Stops to Assist in the Paralympics

My name is Jona Kap. At this moment, I work as a technical writer for Novell, a software company in Provo Utah. I am 26 years old and I have graduated from Brigham Young University with a bachelors degree in English.

I lived in the Netherlands from the summer of 1996 until December of 1997. That's how I learned Dutch. While there, I lived in Groningen, Amsterdam, and Den Haag. I have also lived in North Belgium and learned also a little Flemmish.

My hobbies are scuba diving and traveling. Actually, this year, I have been to Bonaire, London, the Netherlands, and Fiji. All of these places were amazing! I am actually met quite a few people from the Netherlands while I was in Bonaire. It seems to be a popular spot for Nederlanders to take a vacation.



I was a missionary for my church to the Netherlands starting in March 1971, and that shaped my whole life. After my return I attended The University of Utah school of business and met a beautiful girl named Diane. That was in November of 1973. We were married in June of 1974. We have four great kids. Jeremy, 26, at school at Utah State, horticulture. Roger, 23, In the Air Force as jet engine mechanic, He's married to Carole and we have no grandchildren yet. Jennifer, 20, ticket dest manager for Sky West Airlines and Melissa, 17, a senior and cheerleader at Woods Cross High School.

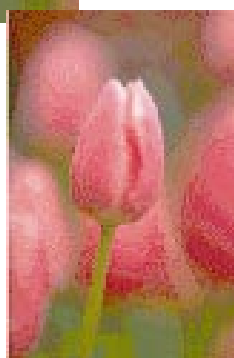


I look forward to meeting you and working directly with you. I wish you the best of success in your individual sports and contests.

We still carry on many Dutch traditions at our home. All of our animals have Dutch names and we love the Dutch people.



Jona Kap



Ralph Crook

Volunteer Section

American Has License to Speak Dutch

Hi! My name is Garrett Winn. I grew up in California, but I currently live in Utah, where I am a technical writer and usability engineer at a company called NextPage. Although we are a small company, we have clients like ABN-Amro who use our software.

I am 30 years old and I have a degree in English from Brigham Young University. I lived in the Netherlands from 1991 to 1993 and learned to speak Dutch fairly well during that time. Unfortunately, I have not had many chances to practice, so I am not as good at speaking Dutch anymore. I am looking forward to working with you so I can get some good practicing in!

When I was in the Netherlands, I lived in Eindhoven, Assen, Rotterdam (north), Maastricht, and Den Helder. As you can see, I got to see lots of different parts of the country.

I love to read (I brought back several Dutch books with me), play computer games, and be with my family. I have been married for almost 8 years, and we have 3 children: 2 girls and then a baby boy.



Garrett Winn



Kimberly Jackson

Dutch Student in America:

Finds Strength with Dutch Paralympians

My name is Kimberly Jackson. I was born in Ablasserdam South-Holland, Netherlands. For about a year and a half, I have lived and worked in Provo, Utah—an inviting town, filled with students, that is roughly forty-five minutes south from Salt Lake City. I work and study at Brigham Young University and sometimes I have time to do something fun during the weekend. Many of my friends here are also international students and thus, we have much in common.

A few of my friends and family members from the Netherlands have been here on vacation. They have enjoyed the Utah's beautiful landscape—the sun and the snow. It is difficult to get used to the dryness and living in the desert after all the rain in the Netherlands, but if you take the time to discover what the landscape and the climate together bring, then you are sold.

I must admit that I miss the Netherlands, especially the friendliness of the people. I even get homesick from time to time for a sandwich with cheese and hagelslag.

I look forward to the Paralympic games and working with the Dutch team. I hope that they bring with them their pride of the Netherlands and a competitive performance. Good luck!



Jona and Kimberly working together to prepare for the Dutch athletes and dignitaries

Sports Section



Competition Venues

The competition venues for the Salt Lake City 2002 Paralympic Winter Games are:

Snowbasin Ski Area

Events: Alpine Skiing, men's and women's downhill, giant slalom, slalom and super-G.

Capacity: 23,500

Location: State Route 226



Highlights: The men's and women's downhill courses were designed by 1972 Olympic downhill champion Bernhard Russi of Switzerland and are considered to be among the most challenging in the world.



Snowbasin Ski Area

Soldier Hollow

Events: Nordic Skiing, men's and women's biathlon and cross country

Capacity: 15,200

Location: Wasatch Mountain State Park



Highlights: Athletes and officials have applauded Soldier Hollow as one of the best-designed courses because spectators rarely lose sight of the skiers.



Soldier Hollow

E Center

Events: Ice Sledge Hockey, men's tournament (6 teams)

Capacity: 10500

Location: 3200 South Decker Lake Drive



Highlights: The E Center hosted the Ice Sledge Hockey World Championships from 20 to 25 March 2000. A record crowd of 6,311 attended the gold-medal game.



E Center

Non-Competition Venues

The non-competition venues are:

Rice-Eccles Olympic Stadium

Event: Opening Ceremony.

Capacity: 52,000

Location: 451 South 1400 East

Highlights: The Stadium is located on the University of Utah campus. It was renovated and expanded in 1998 to house additional seating.



Rice Eccles Olympic Stadium

Olympic Medals Plaza

Event: Closing Ceremony.

Capacity: 20,000

Location: Block 85 between North Temple and South Temple and 200 West and 300 West

Highlights: The Plaza is located in downtown Salt Lake City and will receive greater public exposure in promoting a spirit of sharing among the athletes and spectators from around the world.

Paralympic Village

Purpose: Housing for athletes and officials.

Capacity: 3,500

Location: University of Utah

Highlights: The Village's International Zone houses almost every facility available on a small town's main street, including a bank, calling center, dry cleaner, photo shop and post office.



Paralympic Village

E Center

The E Center also hosts the Paralympic Games Main Media Center (MMC). The MMC will offer more than 300 workstations for journalists, Games information and results, and an on-site food service. The MMC will operate from 1 to 17 March 2002.